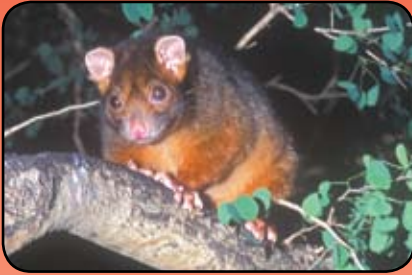


WILD back yards

This is a guide to some of the animals living around you. Upload pictures and information of your own sightings to an online encyclopaedia. Visit wildbackyards.net.au
ALWAYS ASK AN ADULT TO EXPLORE WITH YOU



COMMON MAMMALS



COMMON RINGTAIL POSSUM

Pseudocheirus peregrinus

Identification: Body length 350mm; tail length 350mm; weight up to 1kg. Size of a small cat; silver-grey or brown back; rusty-red flanks, face, arms and legs. Thin tail has a white tip. Eyes caramel-brown.

Habitat and range: Rainforest, thick vegetation along watercourses, parks and backyard gardens.

Notes: Nocturnal; feeds on flowers and leaves



FAWN-FOOTED MELOMYS *Melomys cervinipes*

Identification: Body length 114mm; tail length 160mm; weight 70g. Rat-sized; variable colour, but adults are usually brown rather than grey; belly pale to whitish; tail longer than head-body length, hairless with small scales arranged like mosaic bathroom tiles.

Habitat and range: Rainforest and moist lantana, bracken, creek verges of the D'Aguilar Range and southern foothills. Common in restricted habitat.



WATER RAT *Hydromys chrysogaster*

Identification: Body length 300 mm, brown-black back, golden belly, small ears, flattish 'square' head; white tipped tail.

Habitat and range: River banks, estuaries, beaches, mangroves, wharves, lakes, dams, creeks and watercourses. Reasonably common. Active day and night.



Look up more animal identifications in Queensland Museum Wild Guides.

RARE MAMMALS



BRUSH-TAILED PHASCOGALE

Phascogale tapoatafa

Identification: Body length 200mm; tail length 190mm; weight 180g. Rat-sized; grey with a black 'bottle-brush' tail.

Habitat and range: Found in trees. Dry eucalypt forest through to rainforest. Rare; patchy distribution in coastal areas of all mainland states.



GREATER GLIDER

Petauroides volans

Identification: Body length 400mm; tail length 500mm; weight 1.5kg. Body may be charcoal-brown to creamy-white; large, fluffy ears; shaggy fur; long pendulous non-gripping tail; no stripes.

Habitat and range: Tall eucalypt forests and woodlands. Uncommon, but widespread in southern Brisbane.

